

Fence Feeder



Lid



Mounting brackets



Grill

Specifications

- **Dimensions:** 24" wide x 20" deep x 41" high
- **Material:** Heavy steel grill
Rotational molded virgin polymer with UV inhibitors
- **Weight (in pounds):** 43
- **Warranty:** 3 years

Some assembly required

Highlighted Features & Advantages

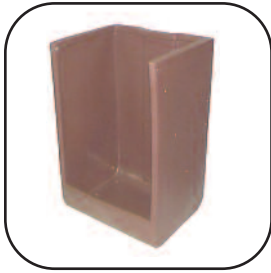
- Mounts to tubing or lumber up to 2" diameter
- Can be mounted at various heights
- Top opening lid for protection from rain
- Square sloped steel grill reduces waste
- Third hook on bottom secures feeder to fence
- Smooth corners, no sharp edges
- Lid is hinged to enable safe feeding from outside of pens

Suggested Applications

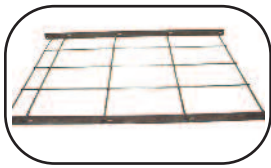
- For feeding hay and grain to horses and exotic livestock
- Vet clinics and research stations

Fence Feeder

Parts List



FLF-T:
feeder body



FLF-10W:
grill



FLF-L:
feeder lid



9FLF-1:
hinge tubes



FLF-30LW:
left hook



FLF-30RW:
right hook



FLF-32:
lock hook



FLF-40W:
lock hook plate

