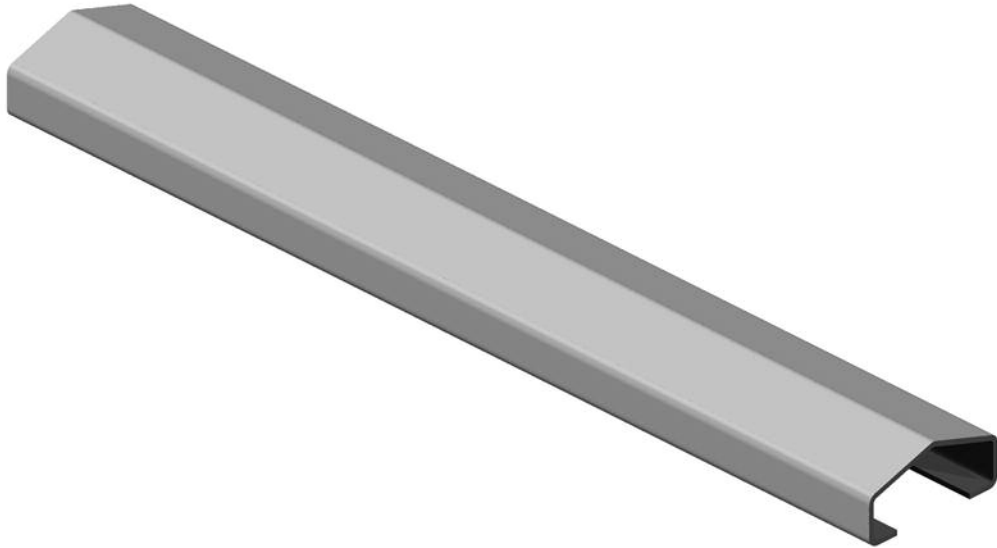


Bunk Connector



Specifications

- **Material:** 10 Gauge Hot Rolled Sheeting
- **Dimensions:** 26" long x 3 7/8" wide
2 3/16" opening
- **Paint:** Baked on powder coat paint
- **Weight (in pounds):** 7.5 lbs
- **Warranty:** 1 year

Highlighted Features & Advantages

- The Bunk Connector keeps multiple bunks in line while feeding and prevents feed from falling in between bunks.